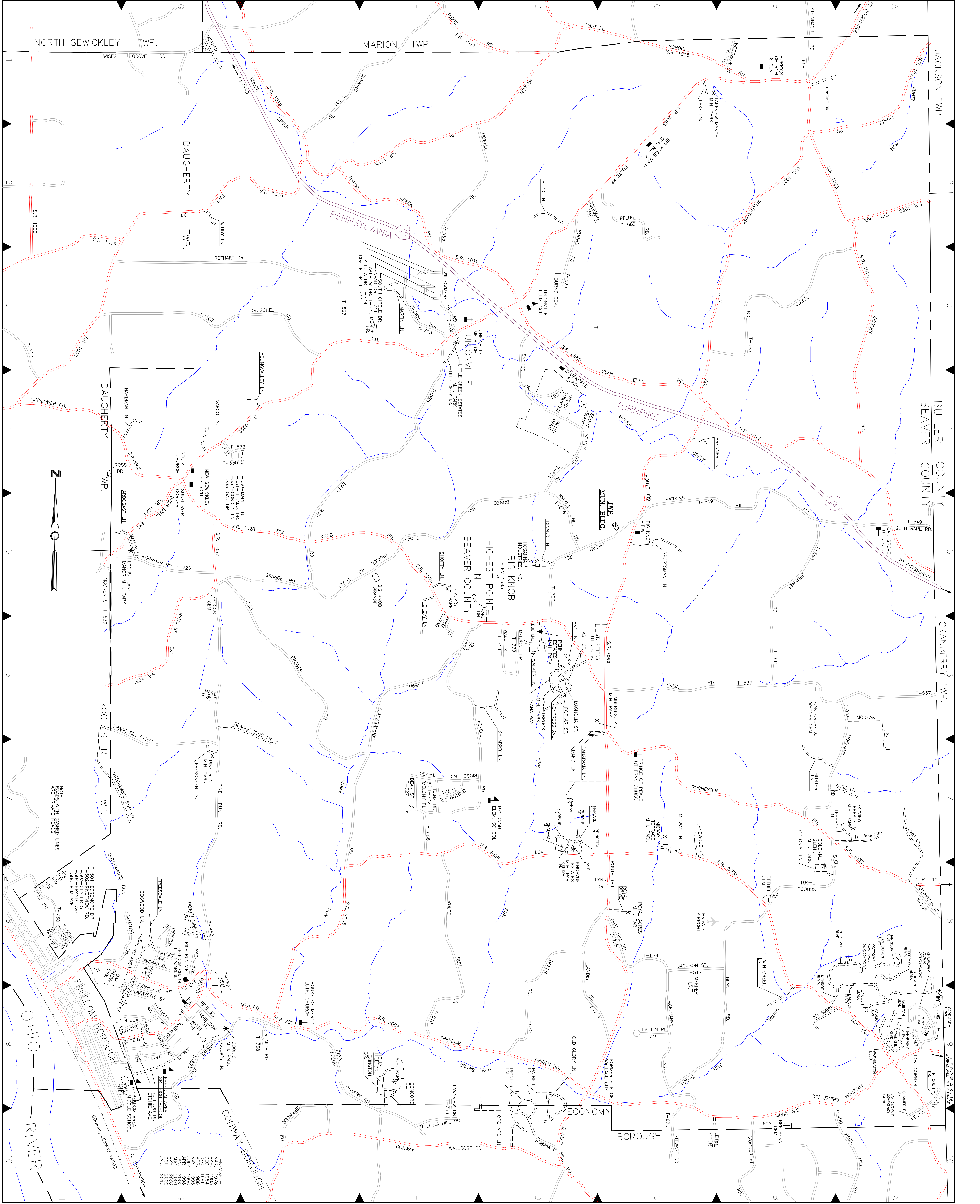
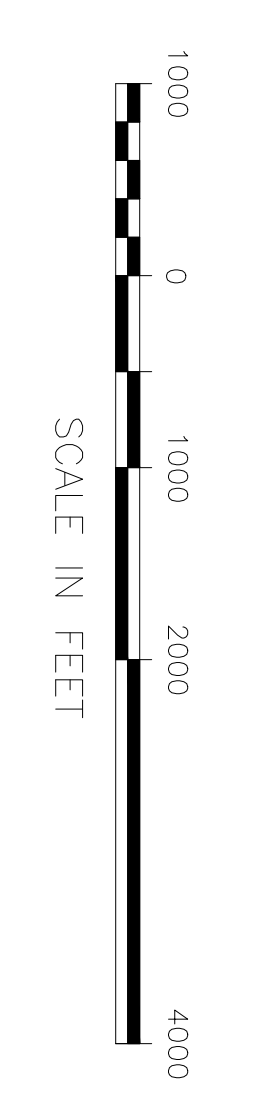


NAME	ROAD NO.	LOCATION
AM LANE	T-234	PROV. 1-234
ANDREWS LANE	PROV. 1-235	PROV. 1-235
ANDREWS LANE	PROV. 1-236	PROV. 1-236
ANDREWS LANE	PROV. 1-237	PROV. 1-237
ANDREWS LANE	PROV. 1-238	PROV. 1-238
ANDREWS LANE	PROV. 1-239	PROV. 1-239
ANDREWS LANE	PROV. 1-240	PROV. 1-240
ANDREWS LANE	PROV. 1-241	PROV. 1-241
ANDREWS LANE	PROV. 1-242	PROV. 1-242
ANDREWS LANE	PROV. 1-243	PROV. 1-243
ANDREWS LANE	PROV. 1-244	PROV. 1-244
ANDREWS LANE	PROV. 1-245	PROV. 1-245
ANDREWS LANE	PROV. 1-246	PROV. 1-246
ANDREWS LANE	PROV. 1-247	PROV. 1-247
ANDREWS LANE	PROV. 1-248	PROV. 1-248
ANDREWS LANE	PROV. 1-249	PROV. 1-249
ANDREWS LANE	PROV. 1-250	PROV. 1-250
ANDREWS LANE	PROV. 1-251	PROV. 1-251
ANDREWS LANE	PROV. 1-252	PROV. 1-252
ANDREWS LANE	PROV. 1-253	PROV. 1-253
ANDREWS LANE	PROV. 1-254	PROV. 1-254
ANDREWS LANE	PROV. 1-255	PROV. 1-255
ANDREWS LANE	PROV. 1-256	PROV. 1-256
ANDREWS LANE	PROV. 1-257	PROV. 1-257
ANDREWS LANE	PROV. 1-258	PROV. 1-258
ANDREWS LANE	PROV. 1-259	PROV. 1-259
ANDREWS LANE	PROV. 1-260	PROV. 1-260
ANDREWS LANE	PROV. 1-261	PROV. 1-261
ANDREWS LANE	PROV. 1-262	PROV. 1-262
ANDREWS LANE	PROV. 1-263	PROV. 1-263
ANDREWS LANE	PROV. 1-264	PROV. 1-264
ANDREWS LANE	PROV. 1-265	PROV. 1-265
ANDREWS LANE	PROV. 1-266	PROV. 1-266
ANDREWS LANE	PROV. 1-267	PROV. 1-267
ANDREWS LANE	PROV. 1-268	PROV. 1-268
ANDREWS LANE	PROV. 1-269	PROV. 1-269
ANDREWS LANE	PROV. 1-270	PROV. 1-270
ANDREWS LANE	PROV. 1-271	PROV. 1-271
ANDREWS LANE	PROV. 1-272	PROV. 1-272
ANDREWS LANE	PROV. 1-273	PROV. 1-273
ANDREWS LANE	PROV. 1-274	PROV. 1-274
ANDREWS LANE	PROV. 1-275	PROV. 1-275
ANDREWS LANE	PROV. 1-276	PROV. 1-276
ANDREWS LANE	PROV. 1-277	PROV. 1-277
ANDREWS LANE	PROV. 1-278	PROV. 1-278
ANDREWS LANE	PROV. 1-279	PROV. 1-279
ANDREWS LANE	PROV. 1-280	PROV. 1-280
ANDREWS LANE	PROV. 1-281	PROV. 1-281
ANDREWS LANE	PROV. 1-282	PROV. 1-282
ANDREWS LANE	PROV. 1-283	PROV. 1-283
ANDREWS LANE	PROV. 1-284	PROV. 1-284
ANDREWS LANE	PROV. 1-285	PROV. 1-285
ANDREWS LANE	PROV. 1-286	PROV. 1-286
ANDREWS LANE	PROV. 1-287	PROV. 1-287
ANDREWS LANE	PROV. 1-288	PROV. 1-288
ANDREWS LANE	PROV. 1-289	PROV. 1-289
ANDREWS LANE	PROV. 1-290	PROV. 1-290
ANDREWS LANE	PROV. 1-291	PROV. 1-291
ANDREWS LANE	PROV. 1-292	PROV. 1-292
ANDREWS LANE	PROV. 1-293	PROV. 1-293
ANDREWS LANE	PROV. 1-294	PROV. 1-294
ANDREWS LANE	PROV. 1-295	PROV. 1-295
ANDREWS LANE	PROV. 1-296	PROV. 1-296
ANDREWS LANE	PROV. 1-297	PROV. 1-297
ANDREWS LANE	PROV. 1-298	PROV. 1-298
ANDREWS LANE	PROV. 1-299	PROV. 1-299
ANDREWS LANE	PROV. 1-300	PROV. 1-300



TOTAL MILES TOWNSHIP ROADS.....50.72
 POPULATION 2000 CENSUS.....7,076
 TOWNSHIP AREA.....33.94 SQUARE MILES

PREPARED BY
 MICHAEL BAKER JR., INC.
 CONSULTING ENGINEERS
 BEAVER, PENNSYLVANIA



- LEGEND
- PA TURNPIKE
 - STATE ROUTE
 - TOWNSHIP ROAD
 - PRIVATE ROAD
 - SCHOOL
 - CHURCH
 - CEMETERY
 - MOBI HOME PARK
 - TWP. MAIN BLDG.

ROAD MAP
 NEW SEWICKLEY TOWNSHIP
 EST. 1891
 BEAVER COUNTY, PENNSYLVANIA